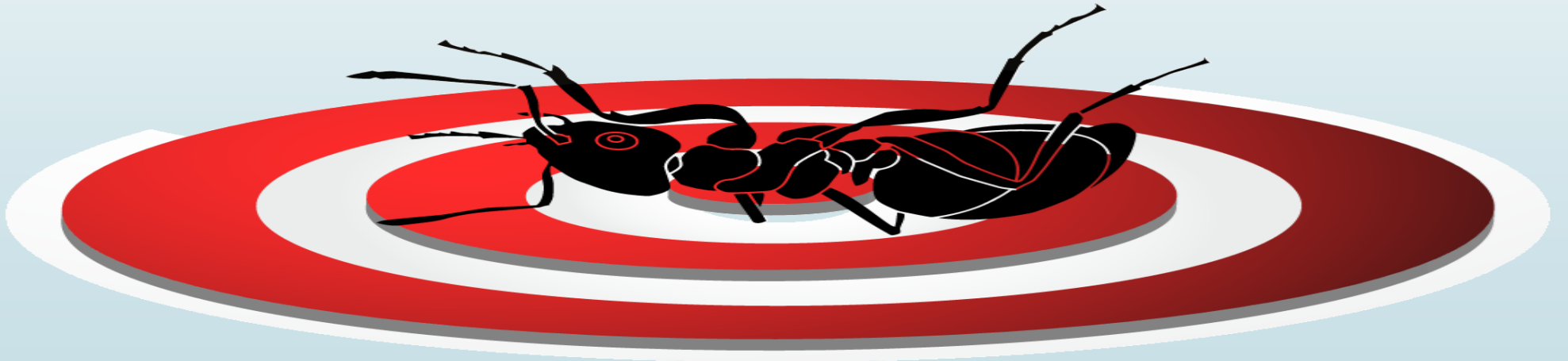


Welcome To:
Anti Pest



PNG

WHO WE ARE?

Our PROFESSIONALSM in the pest control industry ILLUSTRATES how best the management and highly trained technicians substantiate the competition in PNG.

- ✓ **Anti Pest PNG Limited (APPL) is an established company and a 100% nationally owned Based in Port Moresby, Baruni Industrial center with a Branch Operating in Wewak, East Sepik Province, Papua New Guinea.**
- ✓ **We have the management expertise and skills of fully qualified service men ready and able to handle the smallest to the largest of all cliental needs. Our client's expectations are of great importance to us, Therefore, we ensure our services are of quality, effective and always delivered in a timely manner.**

WE ARE CERTIFIED

“AntiPest PNG Limited is registered under IPA Business Name and certified under PNG and Australia to undertake Pest Management jobs with technicians holding CYTEC and Austral Asia Biosecurity certificate and PROTRAIN Certificates under the Australian Training programs.

Holder	Firm	Certificate No:	Issue Date	Expiry Date
✓ Certificate of Incorporation	IPA	1-109388	14/01/16	N/A
✓ Taxpayer Registration	TIN	500511399	14/01/16	N/A
✓ Exemption from COC	IRC	045422342	02/11/17	N/A
✓ Workers Compensation Insurance	TPA	WCI07502	08/06/21	08/06/22
✓ Public Liability Insurance	TPA	CPL07500	08/06/21	08/06/22
✓ Motor Vehicle Insurance	TPA	MVI07501	08/06/21	08/06/22
✓ Certificate of Membership (Australia)	AEPMA	132554	28/02/21	28/02/22
✓ Notice of Approval for Eco ₂ fume Fumigation	NAQIA	ECOPG0045	11/05/16	N/A
✓ AQIS approved Methyl Bromide practitioner	AEI#PG0029MB	AFASPG 0029	09/03/23	N/A
✓ Certificate of Factory Registration	NCC	3386	23/03/21	N/A
✓ COVID-19 Response Tasks				



OUR VISION

We strive to provide the Best in Quality pest control services throughout Papua New Guinea through working in a team and keeping a wise, healthy and wealthy environment.

OUR MISSION

Is to be committed to our valued clients with a desire for excellence in our services. We welcome challenges and pride ourselves on achieving results.

OUR AIM

To be recognized by the industry as a leading pest solution provider.

OUR VALUE

- ***Integrity***
- ***Passion***
- ***Professionalism***

OUR SERVICE FEATURES

FUMIGATION SERVICES

- ✓ *Shipping Containers (20/40 ft) Imports or Exports Using Eco₂fume or Methyl Bromide.*
- ✓ *Tarpaulin/ Sheeting Fumigation for Break-bulk items or Stacked pallets, LCL Cargo-Sea/ Air freight for Timber, Agriculture Products, Artifacts, etc..*
- ✓ *Tablet Application using Quickphos/Toxafos for: grains and food stuff (such as rice, cereals, dried fruits, nuts, cocoa beans and coffee beans)*



GENERAL PEST CONTROL SERVICES

- ✓ Eliminate Cockroaches, Ants, Mosquitoes, Bees, wasps, bedbugs, Insects, & Other Creepies & Crawlies.
- ✓ Rodent Control – Trap Installation, Baiting, Monitoring & Replenishing
- ✓ Termite Prevention Application (Sub-Terranean & Dry wood Termites).
- ✓ Timber Protection & Pre-construction Soil & under-slab Treatment
- ✓ Mold Removal, Sanitizing & Disinfection treatment service

A photograph of a fumigation service setup. In the background, several large grey gas cylinders with yellow and red bands are lined up. In the foreground, two red mesh-covered cylinders stand prominently. To the left, there are smaller black containers with red labels. In the bottom center, a black electronic device with a screen and a coiled white tube is visible. To the right, a stack of heavy metal plates sits on the floor. A white label with black text is attached to one of the cylinders on the right. The entire image is overlaid with a blue geometric design on the right side and a black arrow pointing right on the top left.

FUMIGATION SERVICE

LIQUEFIED GAS
N.O.S
(Cylinders of Phosphine)
3162
2XE
EMERGENCY AND
SPECIALIST
ADVICE
866-52-5000
SIXTYPHIVE
PHOSPHINE
P&H 01100

We provide efficient fumigation services to customers as per International and National Quarantine Standards. Our fumigation operation is designed specifically for each facility. We protect human health and provide food safety and brand protection, as well as eliminate pest infestations. We design and perform our fumigations to limit client and public exposure to risk and liability. Safety is our number-one priority.



** Shipping Containers (20/40 ft) Imports or Exports*



** Tarpaulin/ Sheeting Fumigation for Break-bulk items or Stacked pallets, etc...*

** LCL Cargo- Sea/ Air freight for Timber, Agriculture Products, Artifacts, etc...*



** Tablet Application using Quickphos for: grains and food stuff (such as rice, cereals, dried fruits, nuts, cocoa beans and coffee beans)*

Our Fumigants



1. ECO₂FUME PHOSPHINE GAS

Cytec provides solutions for stored product pest management. Cylinderized phosphine has been used worldwide as a fumigant in stored-product protection for over 20 years. Phosphine gas is injected into agricultural commodity storage (silos, bins and containers) to effectively control all stages of insects when used in accordance with the label.



2. METHYL BROMIDE GAS

Methyl bromide is a broad-spectrum pesticide used in the control of pest insects, nematodes, weeds, pathogens, and rodents. It may also be used in agriculture, primarily for soil fumigation, as well as for commodity and quarantine treatment, and structural fumigation, especially with commodity exporting to Australia and New Zealand.

3. QUICKPHOS/TOXFOS TABLETS



Can be used practically on all food -grains, milled products, as well as processed food and other agricultural products like tobacco, oilseeds, dry fruits etc. without any harmful effects that ensures a complete kill and effective against all grain insects, at all stages of development from eggs to adults

GENERAL PEST CONTROL



FOR: Cockroaches, ants, spiders, fleas, ticks, weevils, bedbugs, bees, wasps, mosquitoes or other insects



SWING
FOGGING

Technique used for killing flying insects that involves using a fine pesticide spray ([aerosol](#))



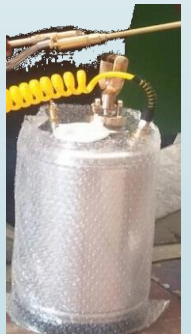
MIST
BLOWING

A process of producing ([mist](#)) by spraying the inside of dwellings with an insecticide to kill target pests.



RESIDUAL
SPRAYING

Coarse low pressure is a ([fine](#)) residual spray, especially to; skirting boards, carpet edge, cracks, crevices, in and behind window frames, tables and cupboards. For cracks and crevices, use of pin stream application is recommended.



FOR: Creepies & Crawlies such as: FOR: Cockroaches, ants, spiders, weevils, bedbugs, etc...

GEL BAITS



POWDER BAITS

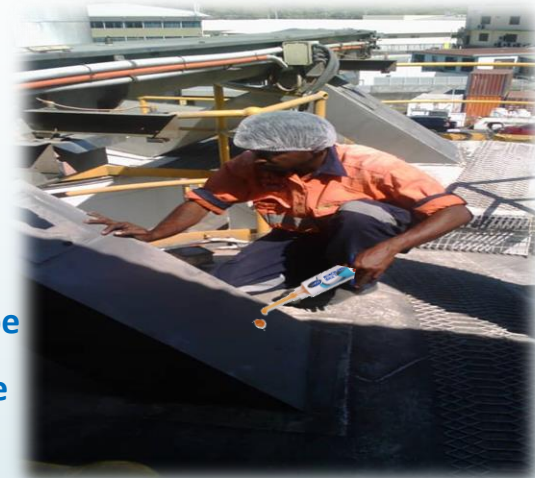


Coopex Dust is a ready-to-use broad spectrum insecticide with a unique formulation. It controls a wide range of insect pests including cockroaches, silverfish, ants, fleas, carpet beetles, bedbugs, spiders, bird mites, hide beetles, European wasps, Potato moth and Subterranean termites.



- ✓ The most advanced treatment
- ✓ Clean, odorless and unobtrusive
- ✓ Highly effective in extremely low doses
- ✓ Fast-acting and rapidly spread to cockroaches in inaccessible harborage through the 'Transfer Effect'
- ✓ Applied simply, safely and conveniently and Retains attraction and potency for long-lasting control
- ✓ Does not go hard or runny in the tube
- ✓ For clean, efficient treatment of cockroach infestations, Goliath is the professional choice

- Duster or Puffer is usually used with Powder Insecticide to control pests harborage from hidden corners or cracks & crevices
- The most advanced treatment to control creepies & crawlies
- Pests are attracted to this bait and greater numbers of creepy/crawly pests especially, roaches & ants will be seen around the bait for some time after placement.
- An effect on the colony population can be expected within 7 days, when frequency of foragers will decline.
- Most nests are eliminated within 14 days.



GLUE BOARD TRAPPER STATION FOR: Creepies & Crawlies such as: Mouse, Cockroaches, ants, spiders, weevils, bedbugs, etc...



Service outcome

- ✓ Traps are installed to kill household insects, including mice, roaches, ants, spiders, and scorpions. Centipedes, or other creepies & crawlies, as they follow their instinctive paths from a tablet inserted.
- ✓ Contains no toxic chemicals or poisons (environmentally friendly)
- ✓ Once target pests are trapped, simply dispose of the entire trap
- ✓ For use as a wall trap or a flat trap in areas with household pest activity

RODENT/RAT/MICE: “GET TRAPPED & DIE”

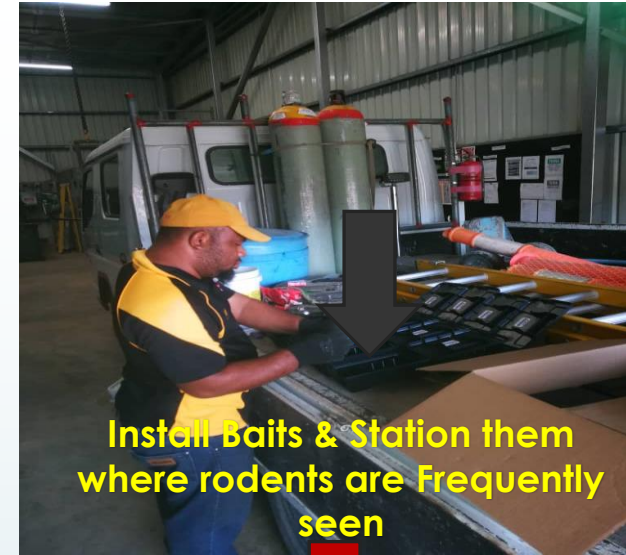


GENERATION OR ROBAN BLOCKS

- ✓ Come in Blue, Black or Green dye aids in the identification of bait consumption in rodent excrement
- ✓ Has a central hole for ease of securing inside bait station
- ✓ Block contains Bitrex, a bittering agent that reduces the risk of consumption by non targets
- ✓ Ready to use bait for the control of rats and mice including those resistant to other anticoagulants.
- ✓ For use in and around agricultural, domestic, commercial, public services and industrial buildings.

PROTECTA SHIELD BAIT STATION

PROTECTA Rat Bait Stations are an integral part of baiting. They keep bait away from children, livestock, pets and other animals, as well as protect bait from dust, dirt, moisture and other contaminants so bait stays fresh longer. Use them also to monitor rodent activity to determine areas of heavy and mild infestation. Station **locks with key**



Install Baits & Station them where rodents are Frequently seen

Monitoring & Replenishing of Baits ONCE on a weekly basis



Service outcome

RODENT/RAT/MICE: “GET TRAPPED FOR DATA COLLECTION”

WIRE
TRAP
CAGES

BREAD &
PEANUT
BUTTER AS
BAITS



The invasive rodent species are trapped to determine the type of treatment specification to go about in regard to the best method, baits to use, location of bait stations and monitoring frequency purposes.

- ✓ Standard baiting cages are baited and place in racks, runways or pathways
- ✓ The bait is monitored regularly on different intervals depending on the status/activity and condition of the bait stations.



Install Baited Cage where rodents are frequently seen



Monitoring & Replenishing of Baits including dead rat removal on a weekly basis



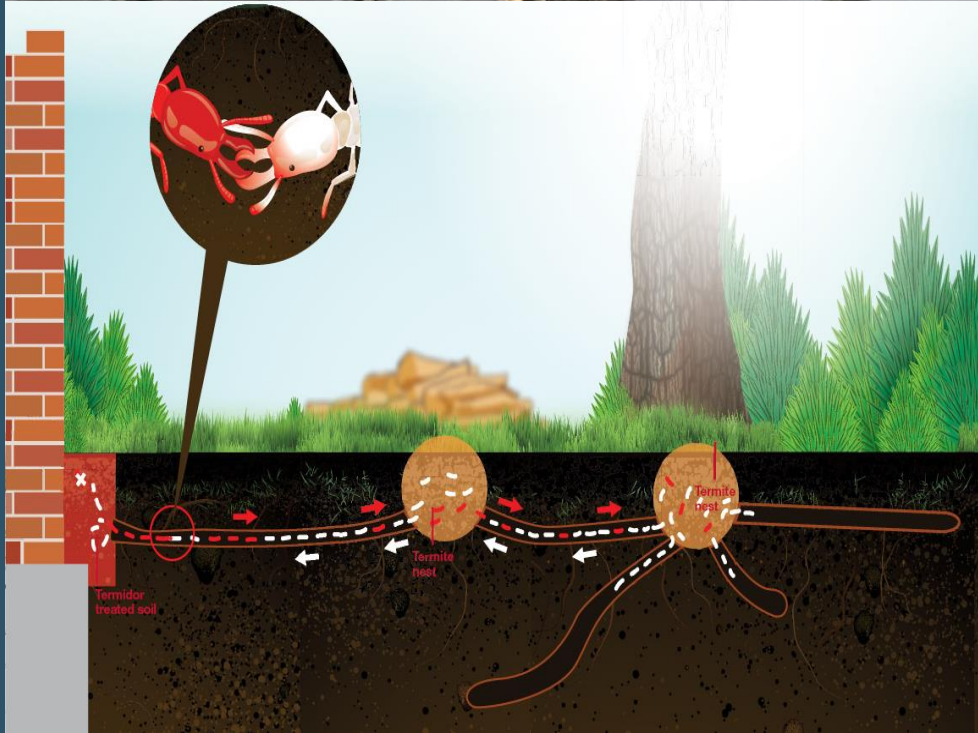
TERMITE PREVENTION APPLICATION

Dry wood termite Treatment- Apart from structural wood preservation measures, there are a number of different (chemical) preservatives and processes (also known as timber treatment, lumber treatment or pressure treatment) that can extend the life of wood, timber, wood structures or engineered wood. These generally increase the [durability](#) and resistance from being destroyed by termites, insects or fungus.



Under-slab treatment /service is an anti-termite treatment provided to eradicate subterranean termites that have invaded a property/building via cement slabs. This treatment involves drilling off existing cement slabs using perimeter of grid formation method and application of chemical solution into the drilled holes to treat the termites infested cement slabs.

Pre-construction soil treatment is performed on proposed new building sites or post constructed properties prior to pouring of cement to prevent sub-Terranean termite/pests invasion into the foundations/base of the building via cracks at the foundation. And for the growth of crop health.

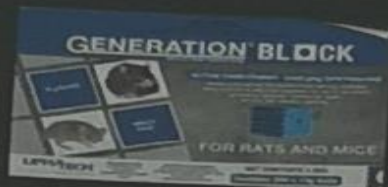
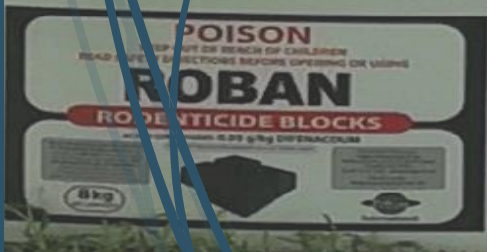




OUR PESTICIDES & EQUIPMENTS

Our Pesticide Products are imported from overseas and are internationally recognized in all aspects of the Pest Control and Hygiene Industry.

The unique Odorless & Transfer effect ensures the powerful active ingredient that can be passed effectively throughout the pest population ensuring pests continue to interact with the pesticide without detection or disruption in behavior – leading to unsurpassed levels of efficacy with long-term baiting control and reduced call backs.



OUR CHEMICAL FEATURES



- ✓ **long-term baiting control and reduced call backs.**
- ✓ **non-staining, odorless, broad spectrum, general insect control product for indoor and outdoor use**
- ✓ **formulated into unique Water Soluble Granules, which dissolve totally clear resulting in a non-staining solution which remains in suspension ensuring uniformity and consistency of application.**
- ✓ **formulated with a novel, non-repellent active ingredient, which provides superior knockdown characteristics and contains Genuine Transfer Effect technology resulting in unmatched performance.**
- ✓ **approved for use both inside and outside and controls a broad spectrum of pests including ants, cockroaches, mosquitos, wasps, bed bugs, spiders and other crawling insects**

PREVENTING THE SPREAD OF COVID-19

“Apart from Pest Control, we also Provide/Distribute Commercial Grade- Hand Sanitizers, surface spray disinfectants & conduct Disinfection Treatment to kill bacteria and germs”

**NOW
AVAILABLE!**

Hand Sanitizer & protectant



**5Ltr – Hand Sanitizer
Bottle with Trigger**

**250ml – Hand
Sanitizer Mist Spray**

- ✓ **NON-STOP 24 HOUR GERM PROTECTION**
- ✓ **KILLS 99.99% OF GERMS**
- ✓ **NON-ALCOHOL FORMULATION**
- ✓ **SOFTENS & MOISTURISES HANDS**
- ✓ **SAFE FOR SKIN CONTACT**



PREVENTING THE SPREAD OF COVID-19

“Apart from Pest Control, we also Provide/Distribute Commercial Grade- Hand Sanitizers, surface spray disinfectants & conduct Disinfection Treatment to kill bacteria and germs”

**NOW
AVAILABLE!**

Surface Spray & Disinfectant



**5Ltr – Surface Spray
Disinfectant**

**500ml – Surface
Spray Disinfectant**

- ✓ PROTECTS SURFACES FOR UP TO 30 DAYS
- ✓ KILLS 99.99% OF PATHOGENS
- ✓ BONDS TO SURFACES
- ✓ INHABITS MOULD & ODOUR
- ✓ HUMAN/ ECO-FRIENDLY



DISINFECTION TREATMENT

We conduct disinfection treatment using a cold fogger by applying a light mist spray wet onto dry surfaces. As it dries, it forms an organo silane matrix of electrostatically charged spikes that bond to a diverse range of surfaces and substrates to create a field of inhibition or promote microbial resistance. Being convenient to use, sustainable, non-leaching, long lasting and above all, friendly to humans, pets and plants.





CONCLUSION

Anti Pest PNG has personnel with extensive experience both in the government and private sectors conducting quality services with many companies in the industry.

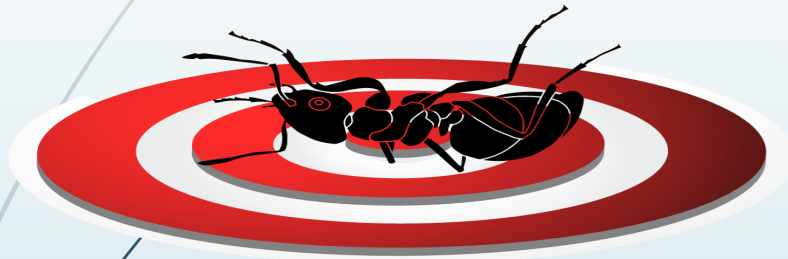
The company since established has an established clientele base from small to big companies in the pest control industry, setting its obligations and goals within the industry.

Our services are of high professional standards and a commitment to our customers is of paramount importance.

“We greatly appreciate the opportunity to earn your business. Your place of work is very important to us and we speak for everyone when we say that we can guarantee your satisfaction with our services””

Contact us for More Information

AntiPest



PNG



**PO Box 1174, PORT MORESBY,
National capital District
Corner Napanapa Road,
BARUNI Industrial Center**



+675 7592-4309



+675 7836-8390/ 7072-4302



**sales@antipestpng.com.pg or
antipestpng@gmail.com**



www.antipestpng.com

Follow/Visit us on:   **+675 7592-4309**

